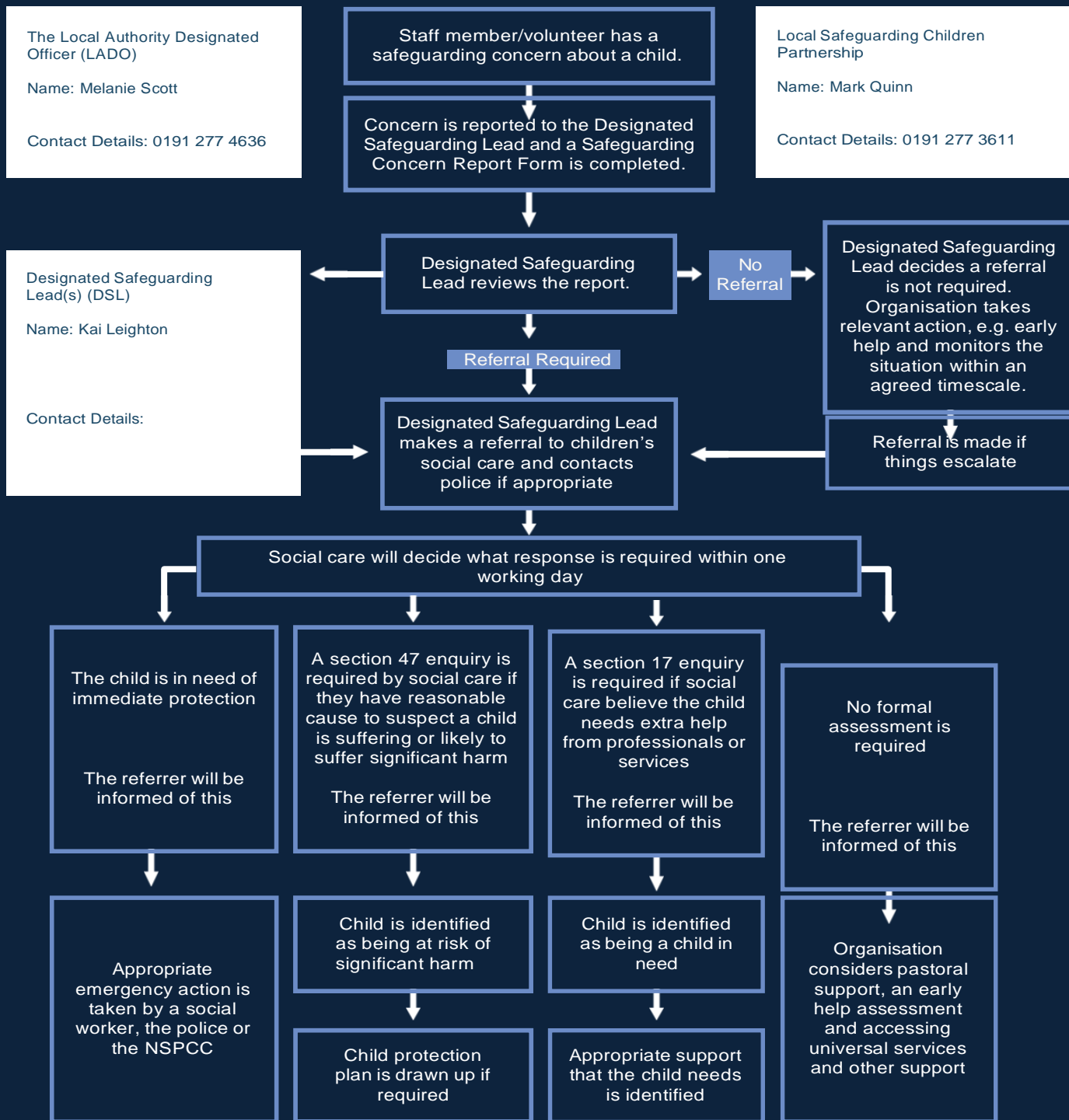


Flowchart of Procedures for Responding to Safeguarding Concerns



All concerns and correspondence will be kept in a secure, confidential file. The child's circumstances will be kept under review at all stages and a referral will be made again if it is appropriate for improving the child's circumstances. The child's best interests must always come first.

If the concern is about a staff member/ volunteer in your organisation, the DSL should refer this to the LADO who will determine the best route of action to be taken.

If you have a concern that a girl has undergone, or is about to undergo, FGM, contact: